

# SKYPORT

at the Wetaskiwin Regional Airport

*Located in the heart of the  
Calgary - Edmonton corridor*



## Available Lots

Phase I: 18 lots – NOW SELLING

Lot sizes from 135 x 70 feet to 210 x 181 feet

## Future Development

Phase II: 28 lots

Phase III: 37 lots

## Zoning Allowances

- Commercial Hangars
  - Recreational Hangars
- Hangars with residence quarters are permitted*  
*RV parking & storage permitted*

Fully serviced—power, natural gas, water & sewer

Fee simple property.

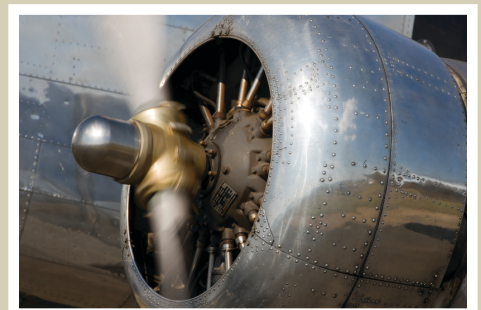
- No condominium fees
- No airport user fees at this time
- Located in Wetaskiwin City Limits

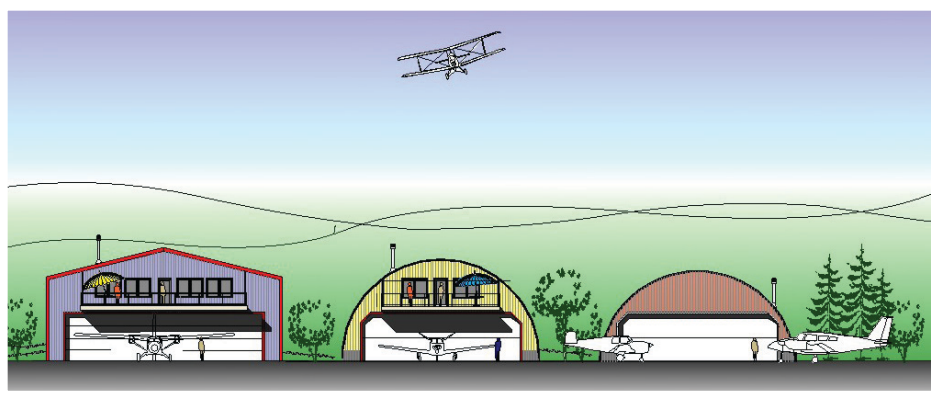
## Lot Pricing

From \$109,900 + GST

## Location

N 52.57.54 W 113.24.40





### Airport Information

- ID—CEX3
- Certified airport
- Runway 3877 x 100 ft asphalt (proposed expansion to 5500 x 100 ft)
- Elevation 2508 ft
- Fully Lit
- NDB/DME/RNAV/Published Approaches
- 100 LL fuel available 24 hours
- Modern Terminal
- NavCanada Pilot Kiosk

### Airport Support Agencies & Businesses

- Aviation fuel & oil services
- Charter services
- Maintenance & restoration services
- Vintage aircraft rides
- Flight Training

### Airport Attractions

- Reynolds-Alberta Museum
- Canada's Aviation Hall of Fame
- Home of the biennial Wetaskiwin Air Show

### Area Attractions

- Convenient location to shopping amenities
- A short drive to Edmonton
- Close to several premier golf courses
- Pigeon Lake recreational areas nearby

## Contact

**Connie Barnes**

p: 780.352.9277

c: 780.445.4080

e: [connie@skyportproperties.com](mailto:connie@skyportproperties.com)

**Byron Reynolds**

p: 780.352.3959

e: [byron@skyportproperties.com](mailto:byron@skyportproperties.com)

SKYPORT by Aerco Developments  
A division of 1425404 Alberta Ltd.  
#300 Centre-on-the-Park  
5505-50th Avenue  
Wetaskiwin, AB T9A 0T4

[skyportproperties.com](http://skyportproperties.com)

